



TM

INTEGRATED TRADE FINANCE

A Global Finance and Market Development Company

INTERNATIONAL AGRICULTURAL PRODUCTION

EXPERTISE IN INTERNATIONAL TRADE AND
PROJECT FINANCE

INTRODUCTORY PRESENTATION
Version May 2026





ITF BACKGROUND AND TODAY'S PROFILE

- Finance and market development company, founded 17 years ago in 2009.
- Founded in 2009 by Jeffrey B. Kamins, MIM/MBA Thunderbird, School of Global Management (#1 ranking in international business by Wall Street Journal), CEO/owner, to support both exporters and project developers/investors with accessing finance to grow their businesses internationally.
- Owner has 28 years of international sales and financing of equipment and projects including US Department of Commerce ITF BISNIS program, which helped to support over \$1 billion in US trade and investment to the CIS countries; **CIS Senior Manager, RWE AG** handling project finance and trading at Germany energy conglomerate, (OTCMKTS: RWNFF); **Director of International Market Development, Valley Irrigation** (Valmont Industries (NYSE: VMI); and **Director of Finance CEE Region, AGCO (NYSE: AGCO)** Switzerland.
- ITF Portfolio of Project Finance Deals Being Structured: Over \$3 billion of transactions and projects under management focused on ESG and food security worth over \$300M+ in 8 countries of Africa, (10) 220,000 MW straw-fired power plants projects in Ukraine; \$2.7 billion airport project in Cameroon; tens of projects with CAPEX financing in Eurasia prior to the War in Ukraine, with clients averaging over 40,000 ha of agriculture operations; and \$75M in renewable fuel processing plants in the U.S., \$45M float glass production factory in Mexico; \$15M in construction plant development in Kazakhstan; over \$150M in integrated farming projects in West Africa in rice, soybean, poultry, and other; \$200M plus in engineering, design and construction of ultramodern theater projects in Cameroon and more.
- ITF executive team of Regional Directors are located in over 44 cities worldwide to support our clients globally covering 85 markets. Each director has an average of 15-20 years experience in international trade and finance, law, logistics, banking, and/or private business, and is very well connected to help identify and recommend buyers and dealers, partners and financial contacts to support transactions.
- Specialized Project Finance capabilities in helping to prepare marketing materials, business plans, financial models, and market to ITF's global financial network to raise medium to long-term debt finance and/or equity for integrated agriculture, energy, mining, construction or other projects.
- Network of over 300 banks and financial institutions including banks, leasing companies, over 35 ECA's and private credit insurers, investment funds, family houses, factoring/forfeiting companies and multilateral development banks.



ABOUT US

- ITF executive team of Regional Directors are located in over 40+ cities worldwide to support our clients globally. Each director has an average of 15-20 years experience in international trade and finance, law, logistics, banking, and/or private business, and is very well connected to help identify and recommend buyers and dealers, partners and financial contacts to support transactions.
- Specialized in working closely with EPC partners to integrate financing into the project development process for airports, large commercial farming and food processing, water infrastructure, energy production and general construction.
- 85 countries of coverage supported by ITF Regional Directors' area of responsibility (AOR)
- Network of over 300 banks and financial institutions including banks, leasing companies, over 35 ECA's and private credit insurers, investment funds, family houses, factoring/forfeiting companies and multilateral development banks
- \$2.7 billion of transactions under management



INTEGRATED TRADE FINANCE™

A Global Finance and Market Development Company

Our Activities



BUILDING CAPTIVE
FINANCE AND
DISTRIBUTION NETWORK



GLOBAL
FINANCE
PROGRAM
THE KEY FINANCING FOR EXPORTS & IMPORTS



DISTRIBUTION
EXPANSION
PROGRAM
BE WHERE YOU NEED TO BE



FINDING BUYERS OF
EQUIPMENT OR SERVICES
FOR ITF CORE CLIENTS &
CONTACTS



ARRANGING FINANCING
FOR PROJECTS/FINDING &
REPRESENTING
INVESTORS



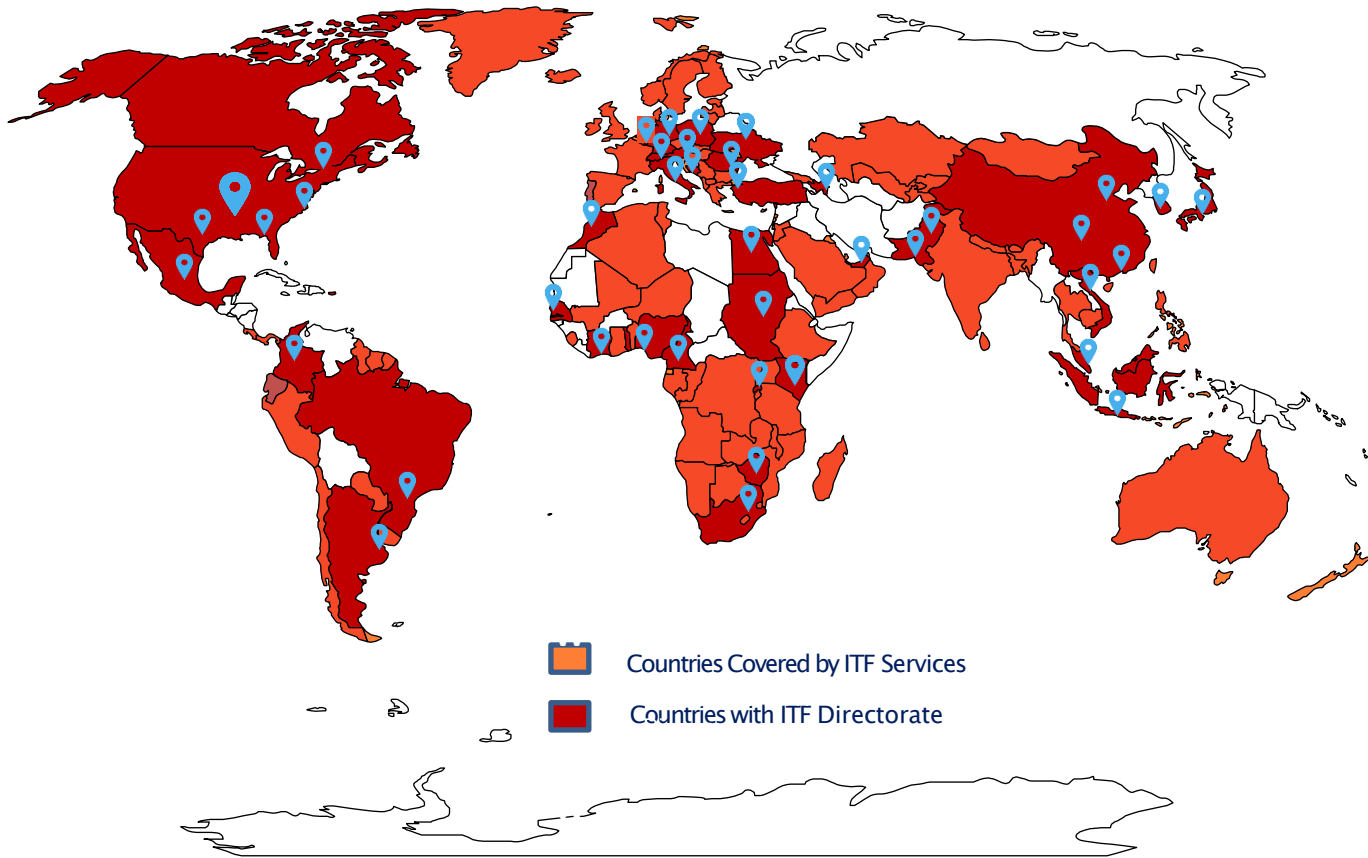
ARRANGING FINANCE OR
TRADE SUPPORT
TRANSACTIONS



www.itf-finance.com



WHERE WE ARE IN THE WORLD: 85+ COUNTRIES



*Primary and Secondary
Agriculture*

www.itf-finance.com

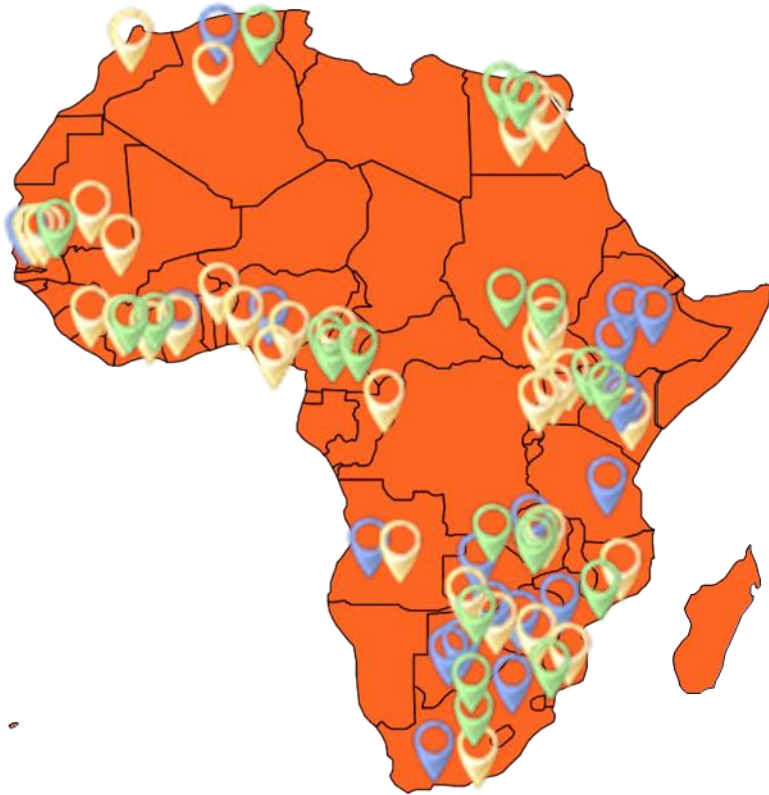




INTEGRATED TRADE FINANCE



**GLOBAL
FINANCE
PROGRAM**
TURN-KEY FINANCING FOR EXPORTS IN 5-PHASES



ITF AFRICA ACTIVITIES

-  Retail finance program created
-  Equipment finance brokering
-  Integrated project finance and CAPEX supply/finance

www.itf-finance.com





INTEGRATED TRADE FINANCE



**GLOBAL
FINANCE
PROGRAM**
TURN-KEY FINANCING FOR EXPORTS IN 5-PHASES

ITF USA / CANADA ACTIVITIES

-  Retail finance program created
-  Equipment finance brokering
-  Integrated project finance and CAPEX supply/finance

www.itf-finance.com





INTEGRATED TRADE FINANCE



**GLOBAL
FINANCE
PROGRAM**
TURN-KEY FINANCING FOR EXPORTS IN 5-PHASES



ITF LATIN AMERICA ACTIVITIES



Retail finance program created



Equipment finance brokering



Integrated project finance and CAPEX supply/finance



www.itf-finance.com

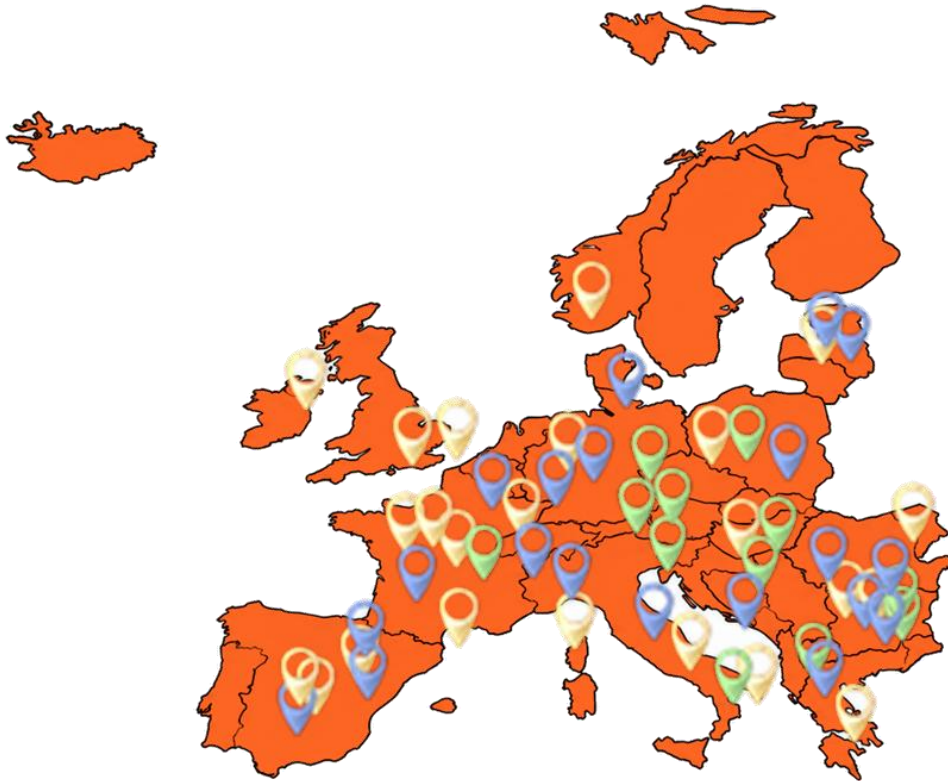







INTEGRATED TRADE FINANCE



**GLOBAL
FINANCE
PROGRAM**
TURN-KEY FINANCING FOR EXPORTS IN 5-PHASES



ITF EUROPE ACTIVITIES

-  Retail finance program created
-  Equipment finance brokering
-  Integrated project finance and CAPEX supply/finance

www.itf-finance.com

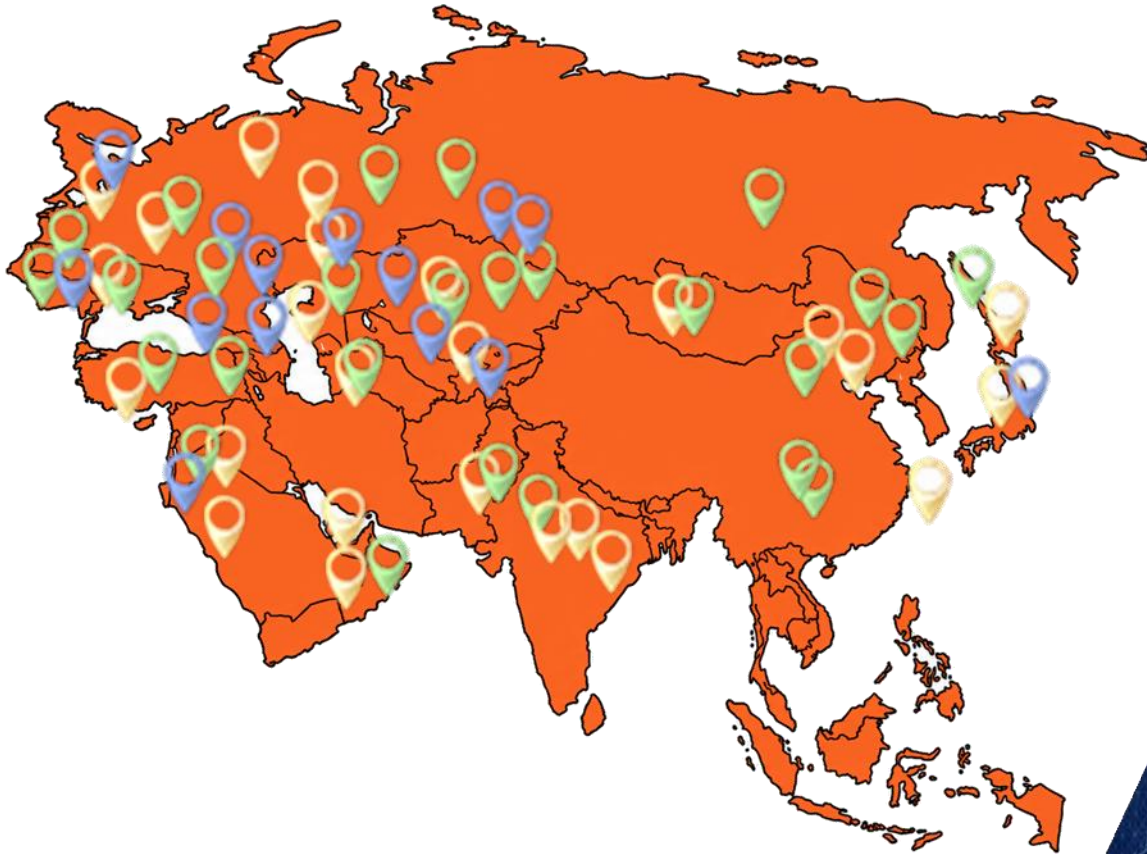




INTEGRATED TRADE FINANCE



**GLOBAL
FINANCE
PROGRAM**
TURN-KEY FINANCING FOR EXPORTS IN 5-PHASES



ITF EURASIA ACTIVITIES

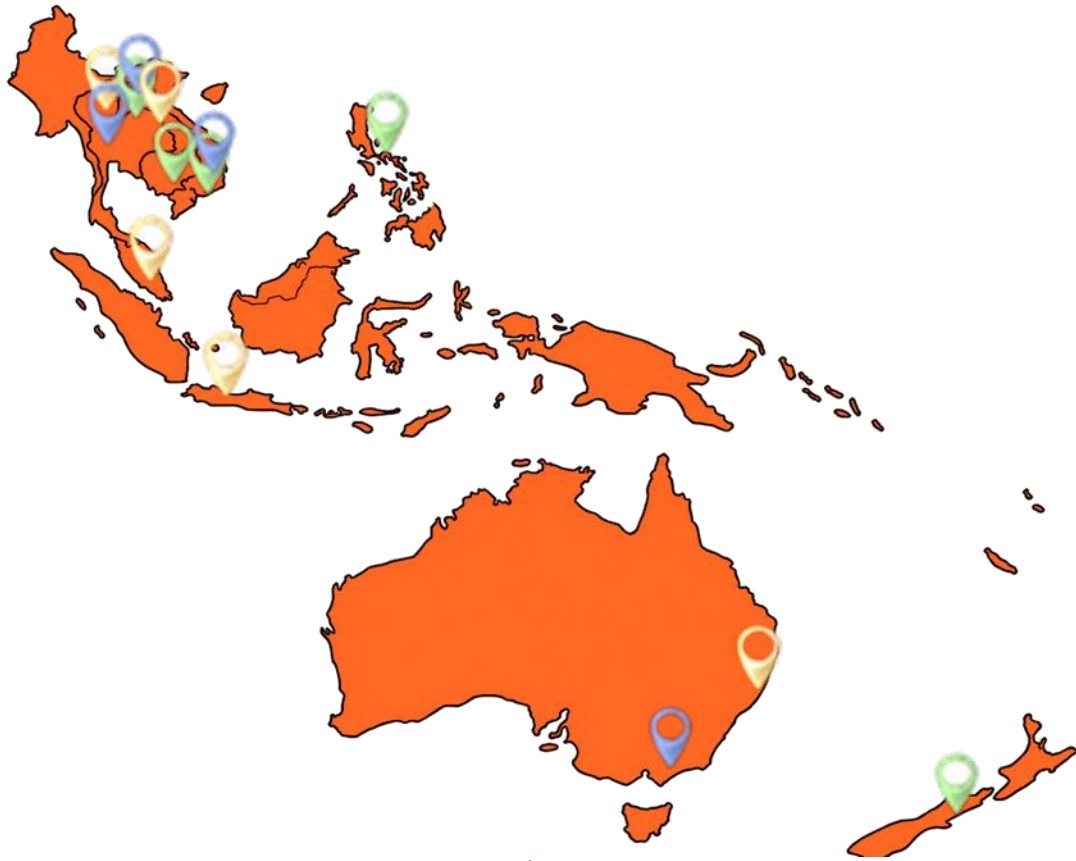
-  Retail finance program created
-  Equipment finance brokering
-  Integrated project finance and CAPEX supply/finance

www.itf-finance.com





INTEGRATED TRADE FINANCE



**GLOBAL
FINANCE
PROGRAM**
TURN-KEY FINANCING FOR EXPORTS IN 5-PHASES

ITF SOUTHEAST / ASIA-PACIFIC ACTIVITIES

-  Retail finance program created
-  Equipment finance brokering
-  Integrated project finance and CAPEX supply/finance

www.itf-finance.com





INTEGRATED TRADE FINANCE

Central Management Team



Jeffrey B. Kamins
CEO and Founder
Hollister, Missouri, USA
Tallinn, Estonia



Anthony Raftopol
Legal Counsel and
Vice President
International
Development
Dubai, UAE



Philip H. de Leon
Vice President
Government Affairs
Washington, DC,
USA



John Crockett
Vice President,
Engineering &
Project Finance
Larnaca, Cyprus



Tehmina Soomro
Director,
International Account
Management
Karachi, Pakistan



Thomas Martin
International
Account Manager
Texas, USA



Eli Westerman
International
Account Manager
Missouri, USA



Akossiwa Toffa
Administrative Assistant
Global Accounts
Lome, Togo



Saira Bashir
Administrative Assistant
Global Accounts
Islamabad, Pakistan



Tahira Zaib
Administrative Assistant
Global Accounts
Islamabad, Pakistan





Global Network of Directors and Representatives



INTEGRATED TRADE FINANCE

AFRICA



Bah Aghanguh Armstrong
Director, Business Development, Africa
Yáounde, Cameroon



Muyiwa Omololu
Director
Nigeria, Rwanda & All Africa Oil & Gas
Nigeria, Rwanda



Burt Louw
Agriculture Engineering & Construction Partner
Johannesburg, South Africa



Matilda Abena Otoo
Director Ghana
Accra, Ghana



Mike Townsend
Director, East Africa,
Nairobi, Kenya



Ossama Yousef
Director, Egypt
Chantilly,
Washington DC, USA
Cairo, Egypt



Aiden Mhere
Director, Africa (SADC Region)
Harare, Zimbabwe
Pretoria, South Africa

ASIA



Dr. Robert Connolly
Director SE Asia
Ho Chi Minh City, Vietnam



Eswari Kalugasalam
Director Malaysia
Kuala Lumpur, Malaysia



Youngjin Lee
Director South Korea
Seoul, South Korea



Bakhtiyar Mamedov
Director
Middle East & Caucasus
Baku, Azerbaijan



Linda Lu
Director
Shanghai, China



Levent Hatay
Director Turkey
Istanbul, Turkey



Dr. Wendy Guo
Director
Hong Kong Area
Hong Kong, China





Global Network of Directors and Representatives



INTEGRATED TRADE FINANCE

EUROPE



Heiner Sprunk
Director Northern
Europe Berlin,
Germany



Mykola Kovalski
Representative Ukraine
Kyiv, Ukraine



Marco Torazza
Director
Switzerland
Zurich, Switzerland



Klaus Holzinger
Director
Global Agriculture
Infrastructure Projects
Vienna, Austria



Miroslav Tym
Director, Czech Republic,
Prague,
Czech Republic

NORTH AND SOUTH AMERICA



Andrew Barker
Director
Latin America
Dallas, TX, USA



Adriano Mayer
Director Brazil
Panambi, Brazil



Juan Carlos Lopez G
Director Colombia
Bogota, Colombia



Ruben Dicon
Director Argentina
Junin, Argentina



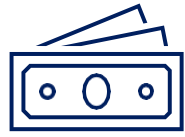
FOOD SECURITY IS ACHIEVED THROUGH EFFICIENCY



THE COMPLETE SOLUTION



PLANNING



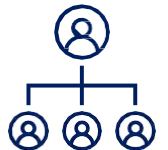
FINANCING



LAND PREP



EQUIPMENT



MANAGEMENT



SERVICE

PREFERRED SUPPLIERS



www.itf-finance.com



Feasibility studies



Mechanization



Harvesting



Irrigation



Land prep & tech



Storage



Extrusion



Processing



Biogas



INTEGRATED TRADE FINANCE™



INTEGRATED TRADE FINANCE
A Global Finance and Market Development Company

OUR CORE SUPPLIERS

www.itf-finance.com

Irrigation & Farm Equipment



Food Processing EPC



Tractors and Trucks



Farm Management & Feasibility Planning



Telemetry / Technology



Grain Storage / Drying



Oil Seed Extraction EPC



Biogas



Financing and Market

Retail Finance

Project Terms

Indicative terms:

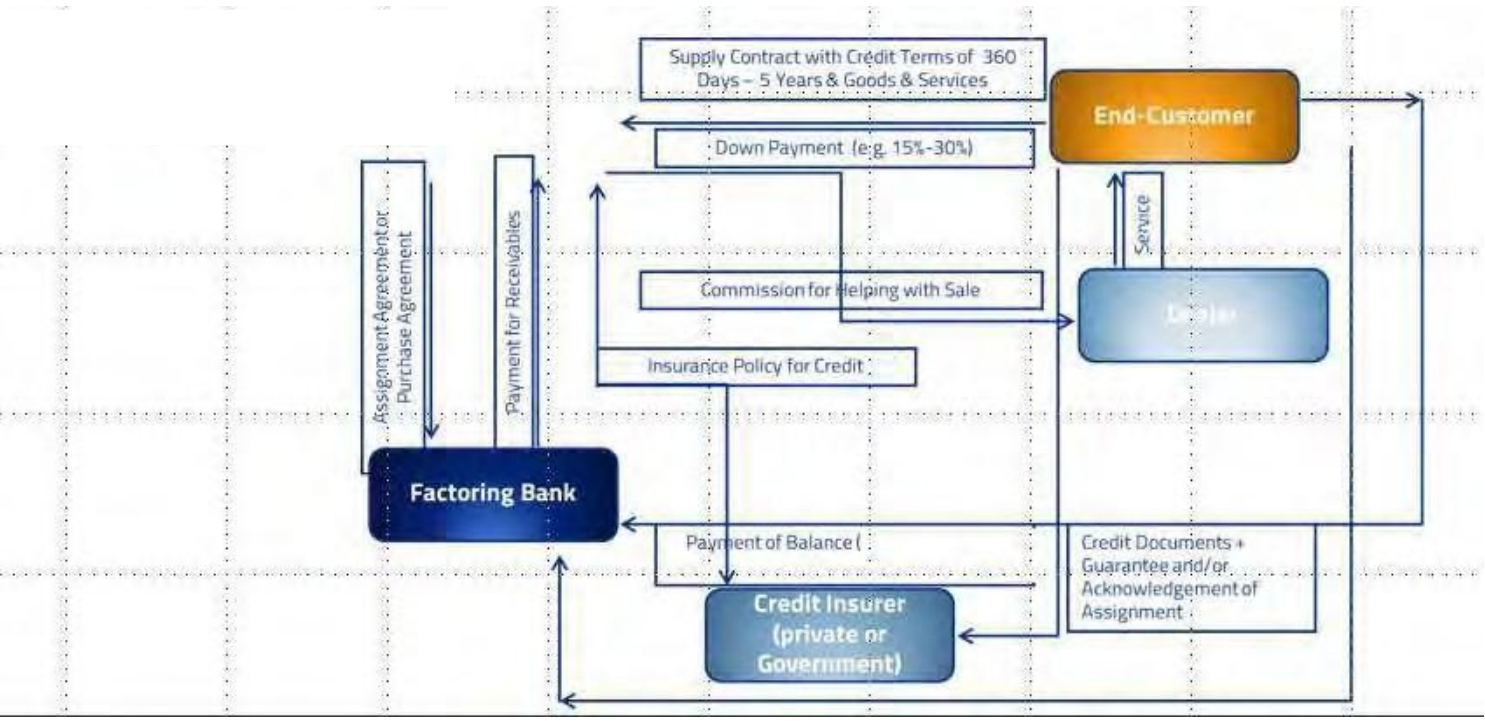
- Up to 60-70% debt financing with 30-40% equity financing
- Equity finance options available MDB
 - 1-15 year financing
 - Quarterly, semi-annual, and annual payment schedule available
 - 1-3 year payment grace periods
 - Average cost of financing per a year: between 5-6.5%
- Financial risk underwriting is based on project future cash flows
- Political Risk (PRI) is available
- Note: Plan ahead! 6-9 months for approval on average



Financing and Market

Trade and Project Finance

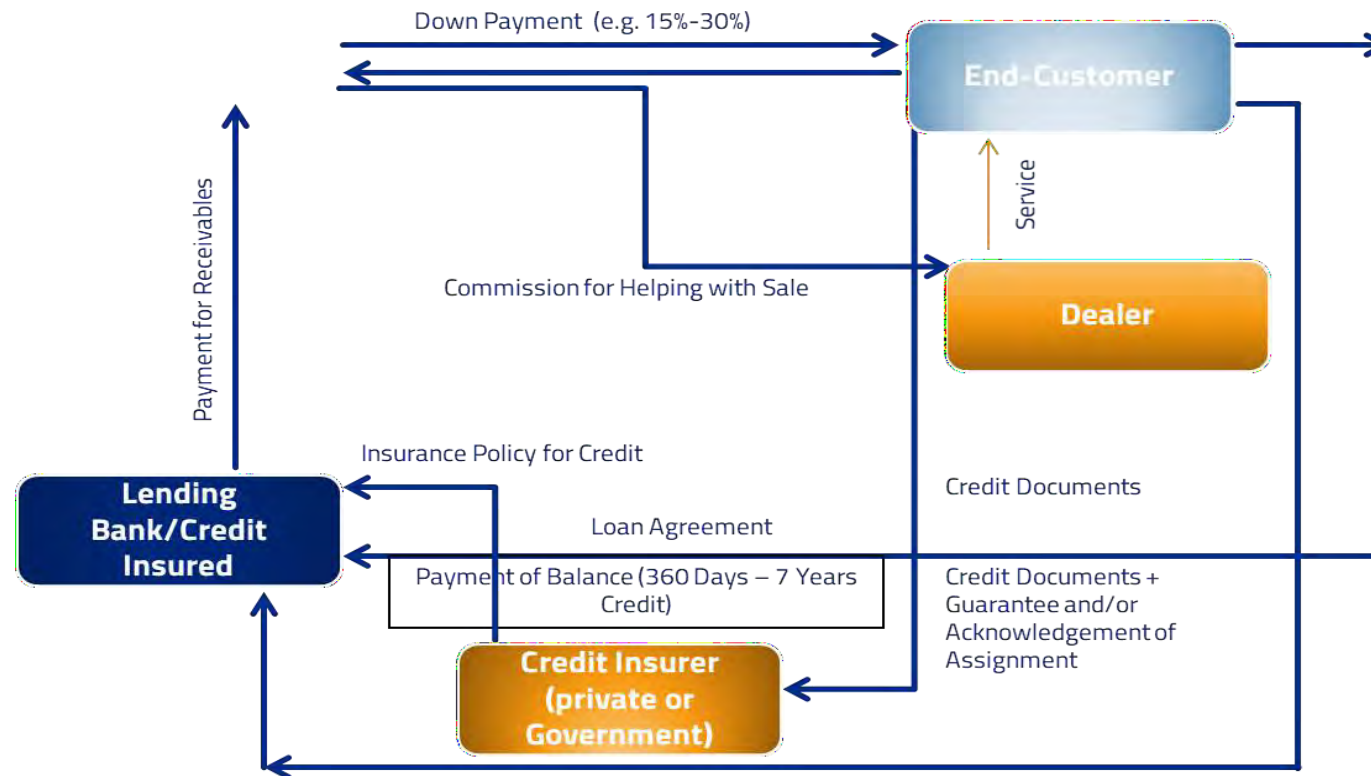
ECA Deal Structure Supplier Credit



Financing and Market

Trade and Project Finance

ECA Deal Structure Buyer Credit





INTEGRATED TRADE FINANCE



Farming Technology. Since 1927.



INTEGRATED TRADE FINANCE



SAME



INTEGRATED TRADE FINANCE



SDF is one of the largest tractor, harvester, autonomous electric tractor and diesel engine manufacturers in the world. Its products are commercialized under the SAME, DEUTZ-FAHR, Hürlimann, Grégoire and Vitibot brands. The company headquarters are located in Treviglio, northern Italy, where the company was born in 1927, when brothers Francesco and Eugenio Cassani created the Cassani Tractor – one of the world’s first examples of a tractor with a diesel engine. Product development, production, sales, after-sales and the distribution of spare parts are overseen by 8 production sites (in Europe and Asia), 16 sales branches (in Europe, Asia, America and Africa), 2 joint ventures, 155 importers and over 3,100 dealers around the world. The strategy of the company is based on continuously improving the product range, expanding the sales network in key and emerging markets, internationalizing production capacity, and controlling technological know-how through in-house development of core components.





INTEGRATED TRADE FINANCE



Farming Technology. Since 1927.





INTEGRATED TRADE FINANCE



AGRICO

More than 100 years of service



INTEGRATED TRADE FINANCE



AGRICO

More than 100 years of service

AGRICO

More than 100 years of service



INTEGRATED TRADE FINANCE

AGRICO is a deep-rooted and strong irrigation company. For more than 100 years, it has faithfully served growers across the continent by providing them with the best technical solutions, irrigation systems and components, as well as ongoing support. As the largest irrigation provider in Southern Africa, Agrico embodies a wealth of knowledge and experience, with extensive design capabilities and first-class service. More than 40 agencies with walk-in shops offer a wide range of quality and affordable irrigation components.

Agrico designs and supplies all types of irrigation systems and specializes in turnkey water supply projects. We build long-term relationships and offer excellent service to producers across Africa.





INTEGRATED TRADE FINANCE



Insta-Pro International

Based in Grimes, Iowa, Insta-Pro International develops industry-leading equipment for producing chemical-free livestock and poultry feeds, vegetable oils and soy food products.

- Holds the ExPress® trade secrets & brand
- World leader of high-shear dry extrusion
- Nutritional expert in extruded ingredients since invention in 1969
- 50+yrs of university research verifying nutritional benefits and improved animal performance

Nurturing Every Bit of Good



Insta-Pro International fuels higher-performing animals through chemical-free processing for growth-minded feed producers who invest in quality.

- **Develop industry-leading equipment for producing chemical-free feed ingredients, vegetable oils and soy food products**
- **Partner with university and independent researchers to optimize nutritional value for ultimate animal performance**
- **Committed to leading the industry around the world in continuously improving quality, output and efficiency**

Equipment Designed to Operate for Decades



9000 Series Extruder

- Generate heat through friction to cook, expand, sterilize & stabilize ingredients
- Chemical-free processing
- Optional: Pre-conditioner for Full-Fat Soy production



8008 Series Oil Press

- Use with 9000 extruder to create the ExPress® System for producing mechanically extracted oils & meals for use in feed & food
- Motors exceed industry vibration standards



Parts

- USA built parts with long-lasting reliability
- Warehoused around the globe to expedite delivery
- Uniform precision machining to insure precise fit

Points of Difference

Commitment to quality & performance for over 50 years

Superior Nutrition through Engineered Innovation

DURABILITY

Precision-built equipment with premium components

- 100% internal parts machined
- 45% harder parts vs. competitors, giving up to 10x longer part life
- Motors exceeding industry vibration standard by 47%
- Shaft steel 23% greater vs. standard
- Bolts & fasteners of highest grade & quality
- 100% of equipment tested



CONSISTENCY

Controlled and optimized parameters through process expertise

- Consistent results 24/7
- Achieving 325°F cooking
- PSI up to 1880
- Dwell time < 20 seconds
- 85% de-activation of Anti-Nutritional Factors (ANF)



PERFORMANCE

Animals don't lie: produce greater nutrient digestibility

- Broiler to market weight: 2–4 days earlier
- Egg weight: 6 weeks earlier
- Produce 1 liter more milk/head/day, while reducing diet cost up to \$.22/head/day
- 20% greater total digestible by-pass protein vs. mechanical competitors
- 6.1% more available lysine and 3% more available energy vs. mechanical competitor



INTEGRATED TRADE FINANCE



www.itf-finance.com



www.sukup.com



FAMILY-OWNED & OPERATED



INTEGRATED TRADE FINANCE



Founded 1963

2023 marked 60 years in business

Based in Sheffield, Iowa

Where the company was originally founded

Privately-owned by the Sukup family

3 active generations



FULL-LINE MANUFACTURER



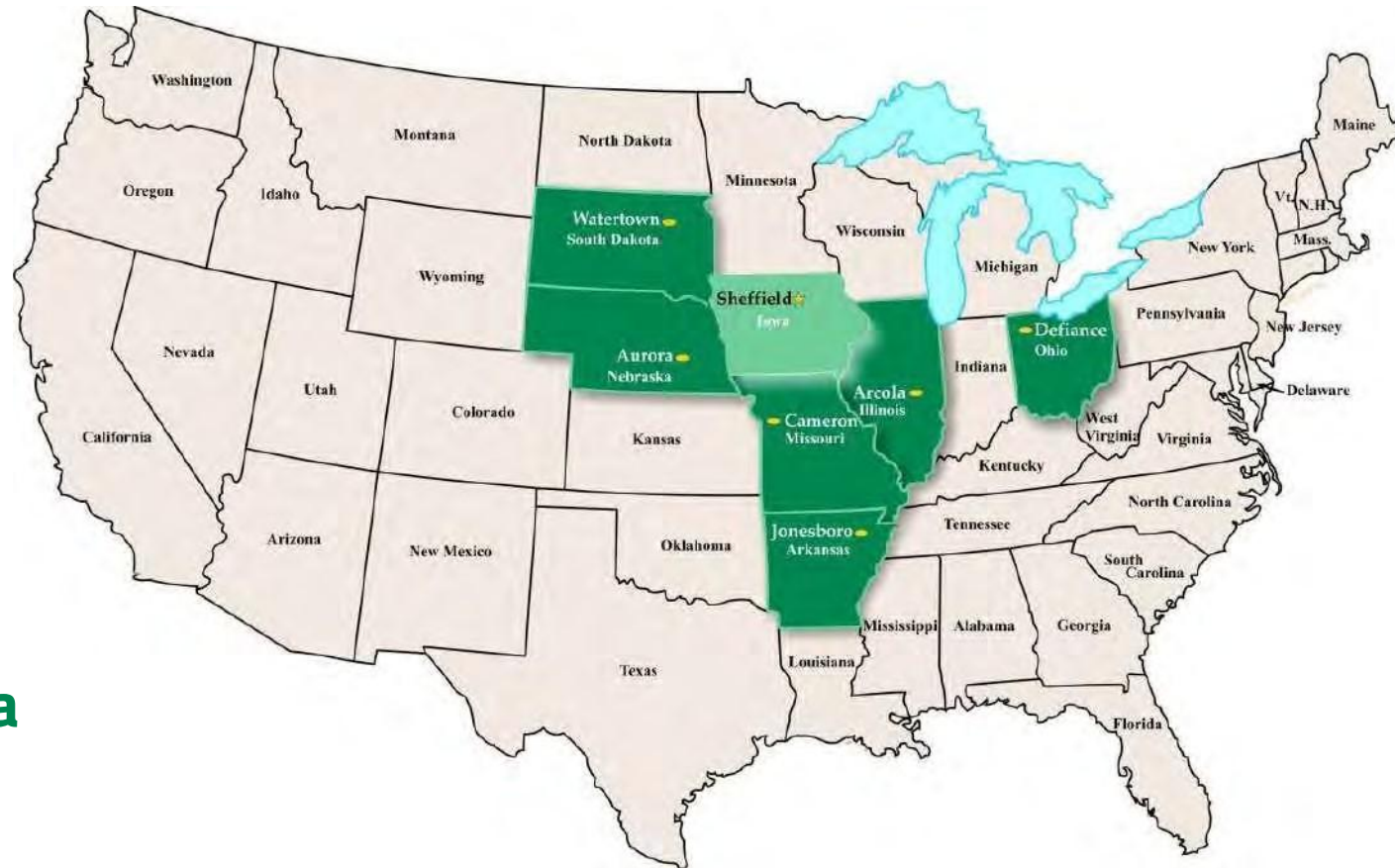
INTEGRATED TRADE FINANCE



- **Grain Bins**
- **Grain Handling**
- **Dryers**
- **Material Handling**

6 DISTRIBUTION CENTERS

- **Arkansas**
- **Illinois**
- **Missouri**
- **Nebraska**
- **Ohio**
- **South Dakota**



GLOBAL MANUFACTURER

- **Sukup shipped to 15+ Countries in 2023**
- **Sukup products are shipped to 90+ countries**
- **Sukup has partnerships with EPC Contractors and Dealers who are on ground providing farmers with expert farming solutions that enable profitable and increased farm productivity.**
- **These companies specialize in their own field, to assist farmers in completing all projects successfully.**






INTEGRATED TRADE FINANCE



 **Farmfront**
BETTER IRRIGATION • STRONGER FARMS



Farmfront brings together world leading irrigation providers to deliver better irrigation on a global scale.

 <p>Partnering at the Farmfront</p>	<p>Providing honest answers farmers can trust to improve their performance and grow sustainably.</p>
 <p>Working at the Farmfront</p>	<p>Delivering cutting edge and digitally enabled irrigation services to suit different farming realities.</p>
 <p>Innovating at the Farmfront</p>	<p>Accelerating innovation to find smarter solutions for sustainable water use in a changing world.</p>



PLANNING



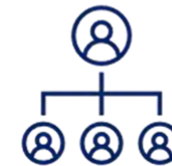
FINANCING



LAND PREP



EQUIPMENT



MANAGEMENT



SERVICE



ABOUT OCMIS

Founded in 1970 and headquartered in Modena, Italy, OCMIS Group designs manufactures and commercialises a comprehensive range of technologically advanced irrigation solutions, operating through four different brands, OCMIS, Irtec, Marani, and Scova. The group is present in more than 60 countries



KEY TECHNOLOGIES

HOSE REELS

PIVOT SYSTEMS

SPRAY BOOMS

TRACTOR PUMPS

SOFT HOSE DRUM

IRRIGATION 4.0



Ocmis is the greatest global constructor of advanced systems for agricultural irrigation and green spaces.

We design and produce irrigation machines and we are famous worldwide for our self-propelling irrigators known as “Rollers”.

We have been the first company in Italy to respond to agriculturalists’ real needs. Year after year, our efforts in terms of investments and strategic choices have resulted in a constantly growing number of our systems present worldwide.





ABOUT IRRIMEC

Established in 1974 and headquartered in Piacenza, Italy, Irrimec Group, is specialised in the design, manufacture and commercialisation of mechanical irrigation systems. The group includes French businesses Otech and Otech 40.

5
Continents
45+
Years Experience

KEY TECHNOLOGIES

HOSE REELS

HOSE REELS WITH PUMP

MOTORPUMPS

IRRIGATION BOOMS

SINCE 1974 IRRIMEC HAS BEEN SYNONYMOUS WITH IRRIGATION ALL OVER THE WORLD





11km²
Production Centre

40+
Years Experience

ABOUT OTECH

OTECH has been designing and manufacturing precision low-pressure irrigation systems since the 1980s at its Puyoô site in France. Expertise, quality, and robustness characterize its savoir-faire. For 25 years, it has combined remote management with its products, which are distributed in over 50 countries across 5 continents.

KEY TECHNOLOGIES

FIXED AND MOVABLE PIVOT

BACK AND FORTH LATERAL

CUSTOM HIPPODROME LATERAL

DITCH-FED LATERAL

POLYPLAS

REMOTE MANAGEMENT

Established in the early 1980s in Puyoô, in the heart of Nouvelle-Aquitaine, the Otech S.A.S. factory capitalises on the extensive experience of Lockwood, American leader when it comes to manufacturing irrigation pivots, and the determination to place Research & Development at the heart of its strategy to achieve its bold ambition of becoming a global leader.

phone: +33 559 651 219

otech-sa@otech.fr



Our products

- Our pivots
- Our linears
- Our controls panel
- Remote controls





ABOUT RKD

Founded in 1962 and headquartered in Valladolid, Spain, RKD is present in more than 40 countries, and is a global leader in pivots. RKD offers the most robust, effective and simple brand of central pivots and linear systems.

Designed to improve and maximise water use in irrigation of fields around the world.

40+

Countries

60+

Years Experience

KEY TECHNOLOGIES

CENTRE PIVOT

MULTICENTRE PIVOT

LATERAL PIVOT

HIPPODROME PIVOT

HYDRAULIC

POLYPIPE

Since 1962

More than 50 years of experience

With experience in the field of irrigation since 1962, the technicians and managers of **RKD IRRIGACIÓN** study, design, manufacture, plan and install the most suitable systems for irrigating crops depending on the terrain's topography, climate, soil type and plant needs.



RKD INNOVATION

Constant innovation has made RKD IRRIGACIÓN at the forefront of irrigation systems manufactured in EUROPE and recognized throughout the WORLD, offering its customers **the best irrigation system on the market**.





INTEGRATED TRADE FINANCE





Founded in 1921, Epstein is an architecture, interiors, engineering and construction company that specializes in delivering sustainable building solutions for clients in the commercial, industrial and public sectors.

Epstein is an employee-owned firm with over 200 employees worldwide based out of our Chicago headquarters, with offices in New York, Raleigh, and Warsaw.

Throughout our 100+ years, Epstein has garnered a reputation as a firm that is continually associated with landmark projects in the United States and worldwide, including the Serta International Center, the winner of the 2010 AIA Institute Honor Award for Architecture.

The Epstein organization also has an extensive industrial portfolio that includes manufacturing plants, distribution centers and R&D facilities, including the LEED-NC Platinum Testa Produce HQ's and Distribution Center.

Epstein has also been responsible for designing and engineering numerous aviation industry projects, such as the recently completed Runway 9L-27R, the first new runway at O'Hare International Airport in 30 years.



Throughout our 100+ years, Epstein has garnered a reputation as a firm that is continually associated with landmark projects in the United States and worldwide, including the Serta International Center, the winner of the 2010 AIA Institute Honor Award for Architecture.

The Epstein organization also has an extensive industrial portfolio that includes manufacturing plants, distribution centers and R&D facilities, including the LEED-NC Platinum Testa Produce HQ's and Distribution Center.

Epstein has also been responsible for designing and engineering numerous aviation industry projects, such as the recently completed Runway 9L-27R, the first new runway at O'Hare International Airport in 30 years.





INTEGRATED TRADE FINANCE



Brown & Co

INTRODUCTION

Brown & Co is an independent partnership specialising in Agri Business consultancy, advisory, brokerage and valuation services for clients across the agricultural sector.

With 300 dedicated staff (of which 30 are full-time agriculturalists and over 35 are agricultural property professionals) Brown & Co is the only RICS accredited Agri Consultancy with a presence and activities in UK, Europe, North and South America and Africa.

Since 2003, Brown&Co has had a managerial or advisory role on over 1m ha / \$5 billion of farmland.



**ADDING VALUE THROUGH 25+ YEARS EXPERIENCE
IN THE AGRIBUSINESS SECTOR**

AGRI CONSULTANCY/ RESTRUCTURING

Hands on – practical experience



ANALYSIS

- Enterprise Gross Margin/ Net Margin analysis together with assessment of yields, sales prices achieved, direct costs, indirect costs, depreciation, interest – and Net Profit assessment on a sub sector/ enterprise basis.
- Review of resources available and if they are „fit for purpose“ e.g. Machinery & Equipment, storage infrastructure, warehousing, grading/ processing equipment.
- Benchmark physical and financial results against Best in class.

ASSESSMENT

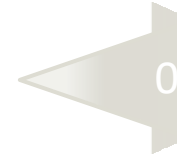
- Review with Management team to identify weaknesses in both technical performance and financial performance.
- Identification of cost overruns/ enterprise underperformance and reasons why.

ACTION

- Financial Modelling of improvements to be made to assess Net Margin performance/ Cashflow/ P&L effects along the value chain. Comparison of „with change“ financial model and „existing system“ financial model.
- Identify investment requirements and carry out robust investment return calculations before stress testing.
- Implement change – and follow up with Management team to take regular corrective action.

FEASIBILITY STUDY

Independent assessment



Technical

crops livestock
early-stage
processing
biomass
supply side industries



Financial

financial model
review and
assessment of
assumptions



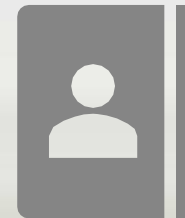
Commercial

market assessments
pricing dynamics
supply and demand
regulatory
framework



Management Team

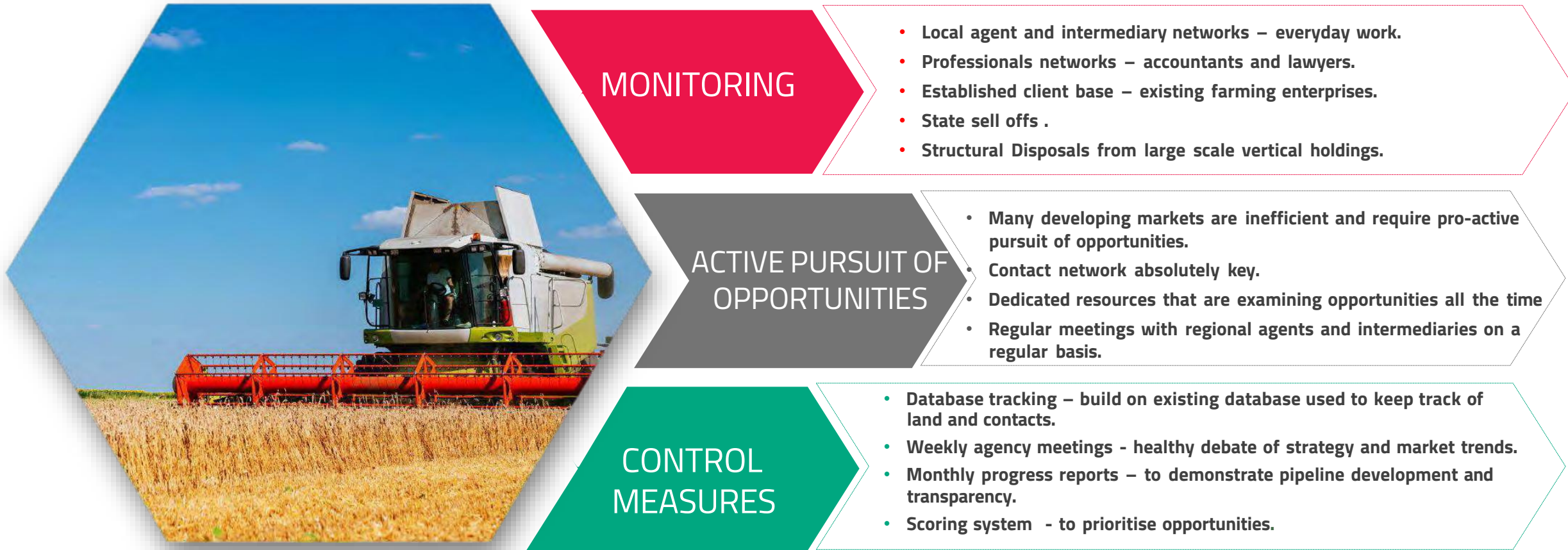
review of management
team's track record,
past performance and
history



Brown & Co provide feasibility assessments (and pre-feasibility assessments) on a wide range of sub sectors and across all geographies. Typically, the assessment breaks down into:

Casting the net wide

Staying on top of the market is not just about being aware of the latest assets but also keeping track of all market activity to truly understand value. Brown & Co has an extensive track record of sourcing high quality assets/ business' on behalf of investors and representing their interests through the acquisition process.





INTEGRATED TRADE FINANCE



STAY CONNECTED



Ag Leader®

Ag Leader®

Ag Leader®



Combine

Monitor harvest performance and enhance productivity.



Planter

Precise seed placement for optimal crop performance.



Machine Guidance

Year-round efficient machine control.



Tile Plow

Remove excess water for optimum growing environment.



Applicator

Nourish and protect crops efficiently and accurately.



INTEGRATED TRADE FINANCE





INTEGRATED TRADE FINANCE



Introduction

Bechtel Corporation

Founded: 1898 | **HQ:** Reston, Virginia, USA

Type: Private, family-owned

Global Reach: 160+ countries

Core Expertise:

- Infrastructure (roads, rail, airports, tunnels)
- Energy (oil, gas, LNG, nuclear, renewables)
- Mining & Metals (mines, refineries, smelters)
- Defense & Security
- Environmental & Clean Energy





PROJECTS BY BECHTEL



INTEGRATED TRADE FINANCE



Revolutionizing Transportation in Saudi Arabia's Capital

Riyadh Metro



Vogtle Units 3 and 4



INTEGRATED TRADE FINANCE



Bechtel Delivered America's First New Nuclear Units in 30+ Years

9,000
Craft Professionals

70,000,000
Work Hours

30%
Less Cost



SOME MORE PROJECTS BY BECHTEL



INTEGRATED TRADE FINANCE

Western Sydney International Airport



Pennsylvania Chemicals



Quebrada Blanca Phase 2



Crossrail's Elizabeth Line



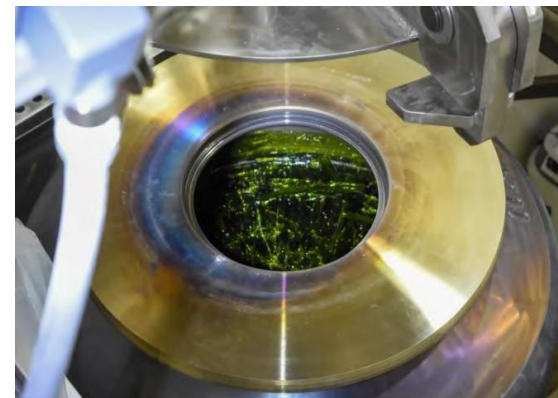
Mobile Launcher 2



Cutlass Solar 1 & 2



Hanford Waste Treatment



Rio Grande LNG





INTEGRATED TRADE FINANCE



Animal fats



desmet

1946

Date of Creation

+25,000

Plants/process sections

+400 M €

Annual Turnover

+1,000

Employees

16

Fully Owned Offices

Desmet is a legal global provider of custom-engineered plants and equipment for the food, feed and biofuels industries.

Our reliable and innovative technologies transform oilseeds, grains and tropical oils into protein feed/food, edible oils/fats, oleochemicals and biofuel

We enable the creation of quality food, feed and biofuel, providing a better future for all.

Desmet benefits from a great worldwide reputation, thanks to over 75 years of unequalled experience, a strong R&D capacity and the most extensive customer base in the industry.

FOOD

- Oil and Fats Refining
- Oil and Fats Modification

FEED

- Grain handling
- Oilseeds preparation and pressing
- Full pressing
- Solvent extraction
- Feed milling
- Rendering
- Plant-based protein

BIOFUEL

- HVO/SAF pre-treatment
- Biodiesel
- Oleochemicals

5 Business Principles at DESMET



Reliability

Our skilled engineering and insistence on quality enable high plant uptime, thus protecting processor profitability.



Accessibility

Our global network of offices ensures a close and reliable partner for project execution and ongoing plant operation.



Sustainability

Our plants are designed for lowest utility, water and chemical consumption to minimize operating cost and enhance sustainability.



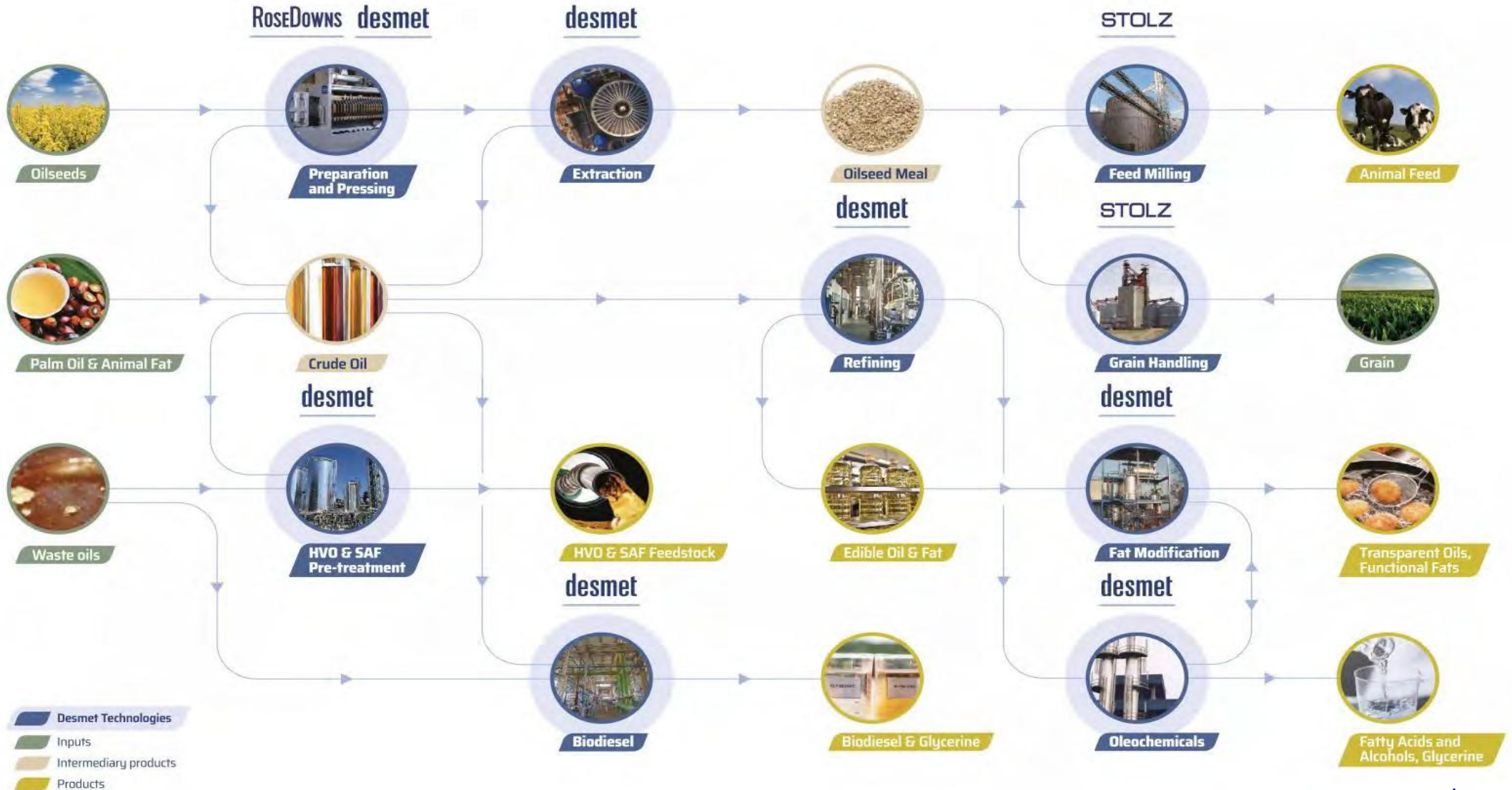
Innovation

Our continuous investment in R&D ensures that we provide effective plants today which are prepared for the industry challenges of tomorrow.



Value-minded

Our global engineering centers in Europe and India along with extensive global sourcing & manufacturing delivers value.



SUPPLIERS AND SERVICE PROVIDERS WE HAVE WORKED WITH



INTEGRATED TRADE FINANCE



Farming Technology. Since 1927.

www.sdfgroup.com

Tractors, diesel engines, and harvesting machinery



www.insta-pro.com

Extrusion equipment and technology for producing animal feed



More than 100 years of service

www.agrico.co.za

Irrigation and agricultural equipment



www.iveco.com

Commercial vehicles



www.epsteinglobal.com

Architecture, interiors, engineering and construction



www.sukup.com

Grain storage, drying and handling equipment



www.agleader.com

Precision agriculture equipment, field mapping software, GPS guidance systems



www.vermeer.com

Heavy equipment for industries

SUPPLIERS AND SERVICE PROVIDERS WE HAVE WORKED WITH



INTEGRATED TRADE FINANCE



www.farmfront.com

Irrigation technology and equipment



www.leoadaly.com

Architecture, engineering, planning, design and consulting services



www.brown-co.com

Agricultural consulting, farm feasibility studies and professional farm management



www.newholland.com

Agricultural and construction equipment



www.gts-na.com

Agriculture equipment



SHACMAN

www.shacman.com

Commercial trucks and heavy-duty vehicles



www.km-advisorsllc.com

Engineering and economic services



www.valleyirrigation.com

Mechanized Irrigation Systems

SOME OF OUR AGRICULTURE SECTOR CLIENTS AND SUPPLIERS OVER THE YEARS (2008-2026)



INTEGRATED TRADE FINANCE™



Farming Technology. Since 1927.



More than 100 years of service



EAST AFRICAN HOLDING
Creating Wealth through industries



Reinke



Vermeer



Farmfront

BETTER IRRIGATION • STRONGER FARMS



POWERED BY AGRI-US
AG EFFICIENCY RECEIVED



Est. 1892



MHP
AGRO & INDUSTRIAL HOLDING



EXPERIENCE THE SUPPORT



SOME OF OUR GOVERNMENT CLIENTS AND GOVERNMENT FINANCING WE HAVE WORKED WITH OVER THE YEARS (2008-2026)



United States



Ukraine



South Africa



Ivory Coast



Estonia



Nigeria



Zimbabwe



Azerbaijan



Egypt



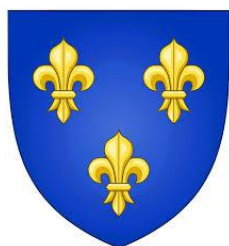
Ghana



Cameroon



P.R. of China



France



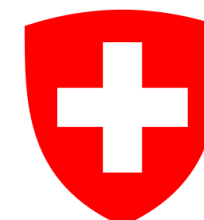
Turkey



Canada



Brazil



Switzerland



Italy

SOME OF THE FINANCIAL INSTITUTIONS WE HAVE WORKED WITH OVER THE YEARS AROUND THE WORLD (2008-2026)



ITF
INTEGRATED TRADE FINANCE™





Contact us for project support:

Tehmina Soomro

Director, International Account Management

HQ Tel: +1 (417) 250 2112

Direct: +92 334 3809342

E-mail: tehminal@itf-finance.com

Headquarters: 101 State Hwy,
Hollister MO,65672, USA

